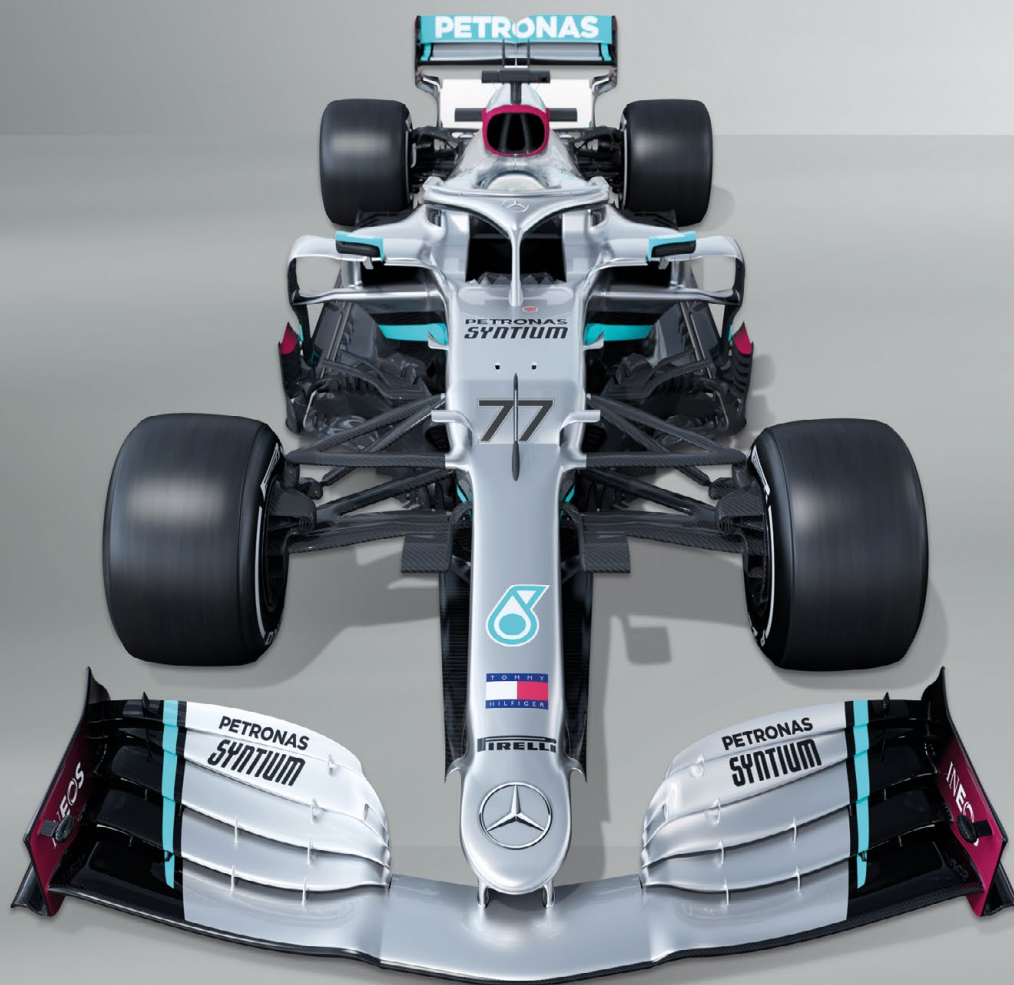


Performance Without Compromise



Official Team Partner

Revolutionary high-speed multi-function devices

The WorkForce Enterprise multi-function devices combine ultra-fast performance with ultra-low energy consumption that only inkjet can offer.

Designed for printing high volume jobs at peak periods, these environmentally smart multi-function business printers are capable of delivering superb print quality at superfast speeds up to 100 ppm. The high capacity DURABrite Pro ink cartridges deliver more printed pages from fewer supplies.

Epson's proprietary PrecisionCore inkjet technology doesn't use heat in the ink ejection process, and it's this Heat-Free Technology that separates our printers from the competition. This core technology allows Epson business printers to deliver exceptional productivity and print quality, while reducing your total cost of ownership and environmental footprint.

WorkForce Enterprise business printers: Where quality meets efficiency



Lower power consumption
Max 320 watts¹

FORMULA FOR SUCCESS:

Combine high-speed print with zero second warm up to deliver the fastest possible printed documents. Where time is money, or resources are stretched, this is a genuine business benefit.



High print quality
up to 600 x 2400 dpi



Ultra-fast print speeds
60 ppm, 75 ppm or 100 ppm

The best possible solution for your specific needs

Match the new range of Epson WorkForce Enterprise devices with your specific application. Choose from speeds of 60, 75 or 100 ppm, each delivering productivity and efficiency benefits for your staff and business.

Standard paper-handling capacity of 2,350 sheets grows by an extra 3,000 sheets with the optional high-capacity sheet feeder, ideal for high volume, uninterrupted print runs.

Applying the Perfect Finish

The optional innovative finishers enable you to apply the perfect finish to your sales and marketing material, along with your educational and training documentation. The booklet-maker with automatic folding (and stapling) allows you to create letters and invoices ready for envelope insertion, avoiding outsourcing complex print requirements. Produce professional colour booklets in-house and on-demand to help promote your business. This not only saves you time and money, it also preserves precious cash-flow.

DIGITAL STORAGE 'BOX' FUNCTION:

WorkForce Enterprise devices act as digital storage devices. Store up to 15,000 pages, across 3,000 documents, in up to 199 boxes on the device's hard drive for on-demand retrieval, print, emailing or upload to the cloud.

Enhanced finishing capability

Increase productivity with advanced finishing such as booklet finisher and hole punch options³.

Right: A fully configure WorkForce Enterprise WF-C21000 with optional high capacity paper input unit, and finishing unit with stacking and stapling.

Options

- | | |
|--------------------|--|
| ① Booklet finisher | ④ Cassette lock |
| ② Stapler finisher | ⑤ Digital storage 'Box' function |
| ③ Bridge unit | ⑥ 3,000 sheet high capacity paper tray |

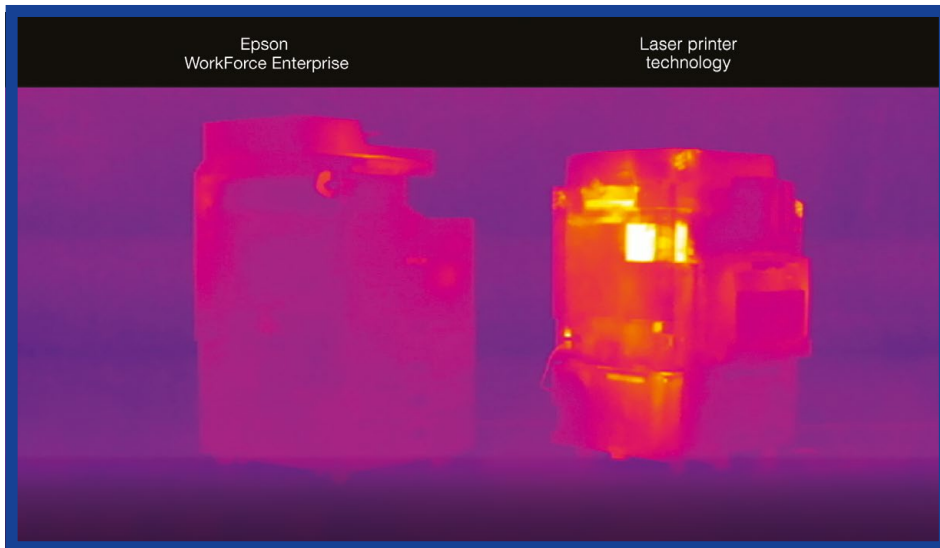


Efficiency champion

87% less power consumption²

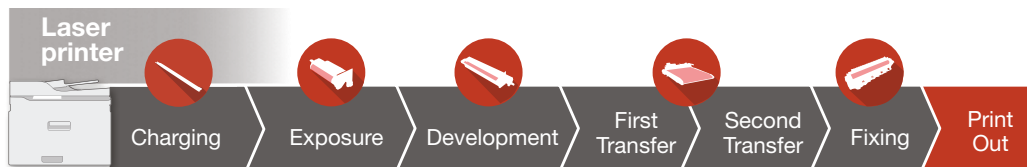
Cut the environmental impact of print with a low power solution that uses fewer supplies, without affecting output quality.

The proprietary Heat-Free PrecisionCore Technology of WorkForce Enterprise uses up to 87% less energy² when printing compared to an average laser printer. It not only lowers electricity costs and CO₂ emissions, but also requires fewer supplies. The simple print process uses less moving parts and, together with high yield inks, this reduces downtime, keeping your business productive.



FORMULA FOR SUCCESS:

In a world of ever-increasing electricity prices (and CO₂ emissions) it's not only financially beneficial, but also reassuring that Epson's innovation and intelligent design will help support your commitment to corporate social responsibility.



Complex technology using **heat** and **pressure**



Simple **cool, contactless** technology



Quality without compromise

There really is no compromise. Thanks to Epson's PrecisionCore linehead inkjet technology and efficient paper transport mechanism, you're getting a robust, reliable and fast multi-function device that increases productivity without sacrificing quality.

Engineered for precision

Epson's DURABrite Pro ink offers the convenience and flexibility of laser sharp print quality delivered on multiple media types and grades, and Nozzle Verification Technology and dot adjustment ensures crisp, consistent print quality.

The paper transfer technology of traditional devices uses a roller feeding system which flattens the paper as it passes under the print head. This can cause the paper feed to become unstable, making it difficult to lay down the ink droplets accurately on the page. The WorkForce Enterprise uses an electrostatic transport belt that ensures the paper is completely flat, enabling the smoothest of gradients and consistently sharp images.

Engineered for 'clean-hands' & 'clean-air'

Epson's DURABrite Pro ink not only offers extra-ordinary print quality, it also enables clean-hands changing of consumables. The simple print mechanism, drawing on lower power and emitting minimal ozone, provides a clean-air environment in which to work.

Engineered for a mobile workforce

Turn your tablet or smartphone into a powerful office assistant. Epson's mobile and cloud printing services allow you to print and scan wirelessly using smartphones and tablets in the office and on the go.

FORMULA FOR SUCCESS:

Epson's clean-hands, clean-air technology is particularly beneficial in work environments where health and safety are paramount, such as healthcare.



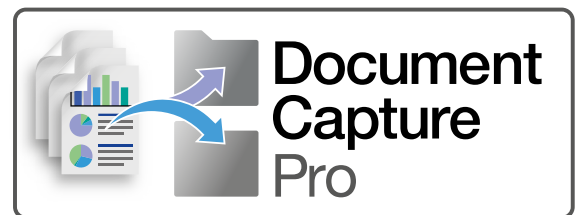
Advanced integration improves workflow

Take advantage of remote management, customise your print options and enjoy seamless compatibility with a wide range of tools and software that can be integrated into your existing IT infrastructure to improve productivity and increase efficiency.

Epson Print Admin



Document Capture Pro



Boost productivity and monitor print usage via a server-based solution that creates a secure printing, scanning and copying environment through user-authentication.

Epson Device Admin

Control, analyse and manage your printer fleet centrally from one intuitive interface, designed to increase productivity and reduce costs.

Mobile and cloud printing

Turn your tablet or smartphone into a powerful office assistant. Epson's mobile and cloud printing services allow you to print and scan wirelessly³ using smartphones and tablets in the office and on the go.

The WorkForce Enterprise range of printers are Document Capture Pro compatible, making it easy to seamlessly and locally manage documents. Document Capture Pro integrates into document management and cloud storage systems, enabling you to capture, enhance, edit and distribute scanned documents effectively throughout your business.

Epson Open Platform (EOP)

Gain complete control of your printing operations via a range of partner solutions, such as PaperCut®, that enable you to adapt the WorkForce Enterprise range of printers to meet specific and changing business requirements. All these solutions help you better manage your office printing.

Model number	Epson WorkForce Enterprise WF-C20600	Epson WorkForce Enterprise WF-C20750	Epson WorkForce Enterprise WF-C21000
Print speed mono and colour (ISO)*	up to 60 ppm	up to 75 ppm	up to 100 ppm
Print method / max resolution	PrecisionCore™ Heat-Free Drop-on-Demand line head inkjet / 600 x 2400 dpi		
Warm-up / first copy / print (mono:colour)	0 / 5.5 / 7.6 seconds	0 / 5.4 / 7.0 seconds	0 / 4.9 / 6.2 seconds
Printer control language emulations ¹	PCL5, PCL6, Postscript 3, Epson ESC/P®-R		
Monthly duty cycle: recommended ²	6,000 to 40,000 pages	8,000 to 70,000 pages	10,000 to 100,000 pages
Hard drive	Box Function: stores up to 3,000 documents, 15,000 pages. Number of boxes (folders) available 1-199		
Paper handling Input	Standard: 4 x 550 sheet feeders plus 150 sheet multi-purpose tray Optional: high-capacity input feeder 3,000 sheets		
Paper weights: cassette / bypass	64 to 160 gsm / 64 to 350 gsm		
Paper handling output standard	550 / 150 sheets		
Optional finisher / stapler	Up to 4,000 sheets, stapled max 50 sheets, shift/offset, includes separate 250 sheet output for faxes		
Optional finisher / booklet-maker	Up to 1,700 sheets, stapled max 50 sheets, shift/offset, separate 250 sheet output for faxes. Booklet-maker up to 7 x 20 sheets, folded, saddle-stitched		
Optional 2/4 or 3/4 hole-punch	Must be ordered along with the optional finisher / stapler or booklet-maker / stapler		
Automatic doc feeder (ADF)	150 sheets Single-pass duplex 60 ppm 110 ipm		
Page sizes (min - max)	3.5" x 5", 4" x 6", 5" x 7", 8" x 10", 8.5" x 11", 8.5" x 14", A4, A3, A3+, A5, A6, half letter, executive (3" x 5" – 8.5" x 47")		
Paper and envelope types ¹	Plain paper, Epson Ultra Premium Presentation Paper Matte, Epson Premium Presentation Paper Matte, Epson Presentation Paper Matte. Envelopes and card stock up to 350 gsm)		
Connectivity printer interfaces	Superspeed USB 3.0, Wireless ⁶ , WiFi-Direct ⁶ , Wired Ethernet (10/100/1000 Base-T)		
Network protocols / print protocols / WLAN sec	TCP/IP v4/v6 / IPP, LPD, Port 9100, WSD / SNMP, HTTP, DHCP, BOOTP, APIPA, DDNS, mDNS, SNT, Ping, SLP, WSD, LLTD / WSD-Print		
Mobile and remote printing ³	Google Cloud Print™, Fire™ OS, Epson Email Print, Epson iPrint Mobile App™, Epson Remote Print, Epson Print, Android, Mopria and Scan-to-Cloud		
Operating systems	Windows® 10 (32/64-bit), Windows 8 (32/64-bit), Windows 7 (32/64-bit), Windows Vista® (32/64-bit), Windows XP SP3 32-bit, Windows XP Professional x64 Edition. Windows Server® 2003 SP2 ⁷ - Windows Server 2016 ⁷ . Mac® OS X® 10.6.8 - 10.12.x ⁸		
Solutions and security	Solutions: Open Platform supports 3rd party applications such as PaperCut® and includes Epson Document Capture Pro software Security: PIN release, user control access, SSL/TLS, IPsec		
Display	11" colour LCD		
Energy rated voltage / frequency / current	AC 100-240V (universal automatic) / 50-60 Hz / 0.9 - 0.5 A		
Power: maximum watts MFD (with finisher) : TEC value	Maximum 300 watts (500 watts): TEC 0.8 kWh	Maximum 300 watts (500 watts): TEC 0.9 kWh	Maximum 320 watts (520 watts): TEC 1.2 kWh
Temperature / humidity / safety approvals	Operating: 50 - 95 °F (10 - 35 °C) Storage: -4 - 104 °F (-20 - 40 °C) / Operating: 20–80% Storage: 5–85% (no condensation:) Safety standards UL60950, CSA C22.2 No. 60950 EMI FCC Part 15 subpart B class B, CAN/CSA-CEI/IEC CISPR 22 class B		
Sound level	Power: 7.5 B(A) Pressure: 59 dB(A)		
Country of origin : telecom regulations	Indonesia : FCC Part 68 (U.S.A.), IC/CS03 (Canada)		
Weight and dims: W x D x H / weight	Base model: 673 x 757 x 1232 mm / 186.1 kg		
Warranty	1 year warranty		
What's in the box	Epson WF-C20600, power cord, Inks CYM and 2 x K	Epson WF-C20750, power cord, Inks CYM and 2 x K	Epson WF-C21000, power cord, Inks CYM and 2 x K
Consumables ⁴ 5 ink cartridges (DURABrite Ultra pigment ink)	C13T02Q100 (Black x 2, 50,000 pages each), Q200 (Cyan, 50k), Q300 (Magenta, 50k), Q400 (Yellow, 50k)	C13T02S100 (Black x 2, 50,000 pages each), S200 (Cyan, 50k), S300 (Magenta, 50k), S400 (Yellow, 50k)	C13T02Y100 (Black x 2, 50,000 pages each), Y200 (Cyan, 50k), Y300 (Magenta, 50k), Y400 (Yellow, 50k)
Copying ISO copy speed flatbed / ADF	60 ppm (mono / colour)	75 ppm (mono / colour)	100 ppm (mono / colour)
Copy quantity / max copy size	1-999 / A3		
Copy features	Auto 1 to 2-sided, 2 to 1-sided, 2 to 2-sided, Fit to Page, Auto Reduction and Enlargement (25 to 400%), ID Copy, Collate, Adjustable Copy Density		
Scanning Scanner type / size	Colour flatbed, auto 2-sided ADF, 11.7" x 17"		
Speed: single pass duplex	60 ipm simplex, 110 ipm duplex		
Optical / hardware / max resolution	1200 / 1200 x 2400 / 9600 dpi (interpolated)		
Scanner features ⁵	Scan to PC via Document Capture Pro, Cloud5 (inc email), Network Folder, Memory Device, PDF LDAP, remove shadows, remove hole-punches		
Faxing modem	33.6 Kbps, as fast as 3 sec per page		
Memory / speed dials	6MB / max 2000		
Features	Fax-to email, Fax-to-folder, Fax-to-in-box		

* ISO mono, colour print speeds are measured in accordance with ISO/IEC 24711/24712/24734/29183. Actual print times may vary on factors including system configuration, software, and page complexity | 1 Not all media types are supported for PCL printing. | 2 For best device performance, run the device at the recommended duty cycle | 3 Most features require an internet connection to the printer, as well as an internet- and/or email-enabled device | 4 Replacement ink yields are estimated based on ISO/IEC 24711 test in Default Mode printing continuously. Ink yields may vary for reasons including images printed, print settings, temperature and humidity. All inks are used for printing and printer maintenance, and all colours have to be installed for printing. Some ink from the included ink is used for printer startup and a variable amount of ink remains after the "replace ink" signal | 5 Scan to cloud requires an internet connection, a free Epson Connect account and a destination email address or cloud storage account | 6 Wi-Fi CERTIFIED™; level of performance subject to the range of the router being used. Wi-Fi Direct may require printer software. | 7 Only printing is supported under Windows Server OS. | 8 Some applications and/or functions may not be supported under Mac OS X.



1. While printing, standard device without options. (WF-C20600: 300 watts; WF-C20750: 300 watts; WF-C21000: 320 watts)
2. Energy used while printing is, on average, 87% less than 25 A3 colour laser counterpart 60-80 ppm MFD models available in the Australian market as at 1 March 2020, based on manufacturers' own specifications.
3. Epson iPrint and Epson Creative Print require a wireless connection and the Epson printing apps – email print and scan-to-click – require an internet connection.

EPSON AUSTRALIA

Level 1, 3 Talavera Road
Macquarie Park NSW 2113
Tel: (02) 8899 3666
www.epson.com.au
ABN 91 002 625 783

EPSON NEW ZEALAND

Level 2, 7-9 Fanshawe Street
Auckland 1010
Tel: (09) 366 6855
www.epson.co.nz

Trademarks and registered trademarks are the property of Seiko Epson Corporation or their respective owners.